



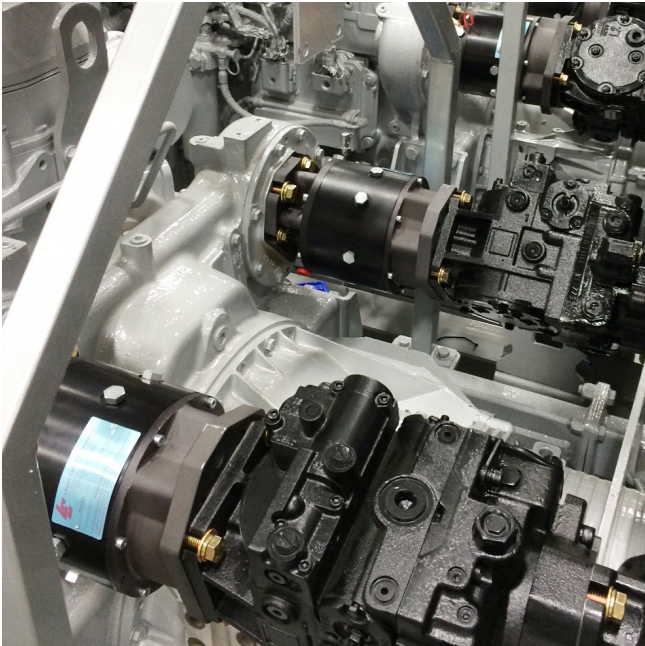
Logan Power Take-Off (PTO) Clutches - Oil & Gas Applications



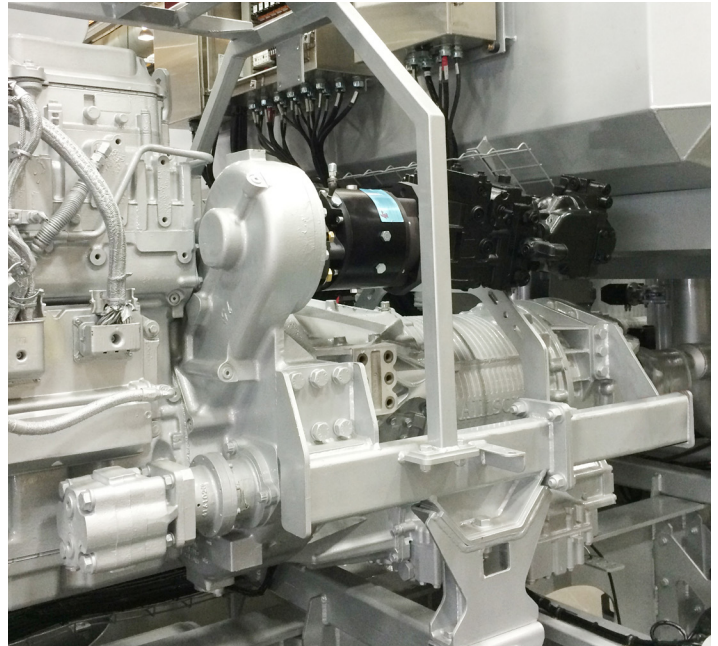
On-highway oil and gas vehicle

In this Oil & Gas vehicle application, the Logan SAE 600 series Direct Drive PTO is mounted on a typical 2-pad live PTO pump pad, sandwiched between a CAT 3412 Diesel Engine and an Allison 8900 Series Transmission. The Logan 600 series Direct Drive Power Take-off (PTO) clutch will connect or disconnect the single and tandem pumps mounted to the live PTO pump pad. The pumps are used only on the job site, and remain disconnected

(via the Logan PTO) when the vehicle is idle and not in use, or when driving to and from the job site. This option to clutch-in and clutch out the pumps minimizes wear and tear on the pumps, reduces unnecessary fuel consumption, and the chances of over speeding the pumps (since they are disconnected from the drivetrain) when the vehicle is at highway speeds during transport.



Close up of (4) Logan 600 series PTO's used to connect and disconnect the single and tandem pumps between jobs, or during on-highway trips to prevent pumps from overspeeding.



Logan SAE 600 series Direct Drive PTO's Mounted to a live PTO wing drive, sandwiched between a CAT 3412 Engine and an Allison 8900 Series Transmission. Logan PTO's are used to disconnect single and tandem pumps on an oil and gas vehicles.

October 2016