

Logan Clutch Corporation[®]
manufacturers of clutches and brake products

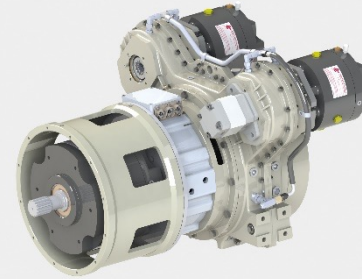


Logan “Learn and Earn” 2024-25 Manufacturing Internship:

Opportunity for Vocational School and Industrial Community College Students with
a 3.5 G.P.A or better in Manufacturing Studies



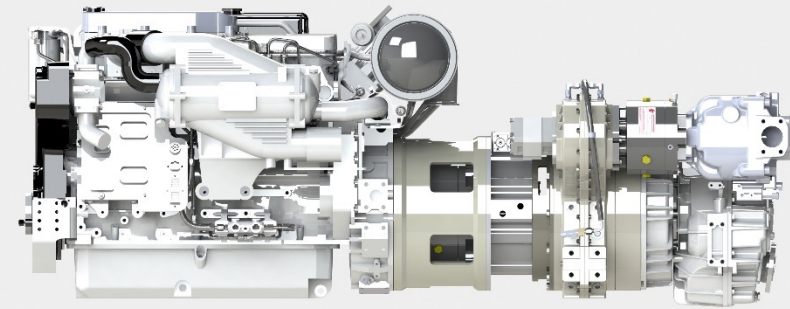
Logan 2024-2025 Manufacturing Internship – Part of the Logan Clutch Corp. Learn and Earn Program.



Logan Clutch Corp, based in Westlake, Ohio, is an original equipment manufacturer (OEM) specializing in industrial clutches and hybrid drives for marine, mobile, and industrial equipment.

Logan's **Learn and Earn** program provides valuable opportunities for high-school, vocational school, community college, university students, and foreign exchange students, the chance to gain practical experience in manufacturing, processing, engineering, and operations, while attending local and regional Community Colleges and Universities.

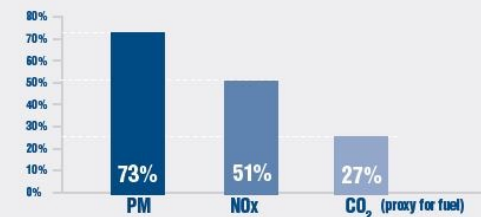
“Logan PTO Clutches and drive systems are a key part of the global hybridization of engine powered equipment” – Andrew Logan, President, CEO



Lower Engine Maintenance Costs = Lower Life Cycle Cost

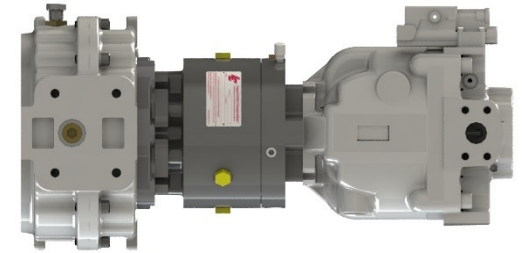
Since main engines are run only during peak operating periods, maintenance intervals are dramatically reduced, increasing the life of the main engine as much as 50%.

Hybrid Emissions Reductions



*Based on a Typical Harbor Tug Operating Profile

Logan 2024-2025 Mfg. Internship



Here are some key aspects of Logan's program:

Real-World Work Experience: Students participate in a **real-world work environment**, learning alongside seasoned professionals. The program emphasizes hands-on experience, allowing students to apply their academic knowledge to practical situations.

1. **Competitive Wages:** While working, students earn **competitive wages**, making the “earn” component of the program rewarding. Logan recognizes that practical experience is essential for career growth.
2. **STEM Integration:** Logan Clutch's focus on **STEM (Science, Technology, Engineering, and Mathematics)** aligns with career-oriented curriculum models. Students with interests in these fields can directly apply classroom learning to real-world scenarios.
3. **Career Exploration:** Participants gain insights into various aspects of the business, including **manufacturing, engineering, marketing, and operations**. They learn how to design, market, produce, ship, and service products. Students learn early on whether they are suited to a particular profession.
4. **Goals and Objectives:** The program aims to **attract and retain** motivated students, fostering their professional development. It also holds itself accountable through strategic alignment and program evaluation.
5. **Foundational Pillars:**
 - **Academic Rigor:** Logan emphasizes the importance of academic excellence.
 - **Relevant Work Experience:** Students gain practical skills through hands-on work.
 - **Student Financial Opportunities:** Logan offers competitive wages and incentives.
 - **Stakeholder Investment:** The program benefits from collaboration with students, professors, and the community stakeholders.

5S

NEXT EXIT



Manufacturing Internship Exposure: 5S of workstations and Work cells



5S LEAN WORKPLACE



1. SORT

Organization – keeping only what is necessary and discard everything else – when in doubt, throw it out



2. SET IN ORDER

Orderliness – arranging and label only necessary items for easy use and return by anyone



3. SHINE

Cleanliness – keeping everything swept and clean for inspection – for safety and preventative maintenance



4. STANDARDIZE

Standardized cleanup – the state that exists when the first three pillars or “S’s” are properly maintained



5. SUSTAIN

Sustaining the discipline– making a habit of properly maintaining correct procedures

Manufacturing Internship Exposure: 5S Cleaning and Organizing of work cells

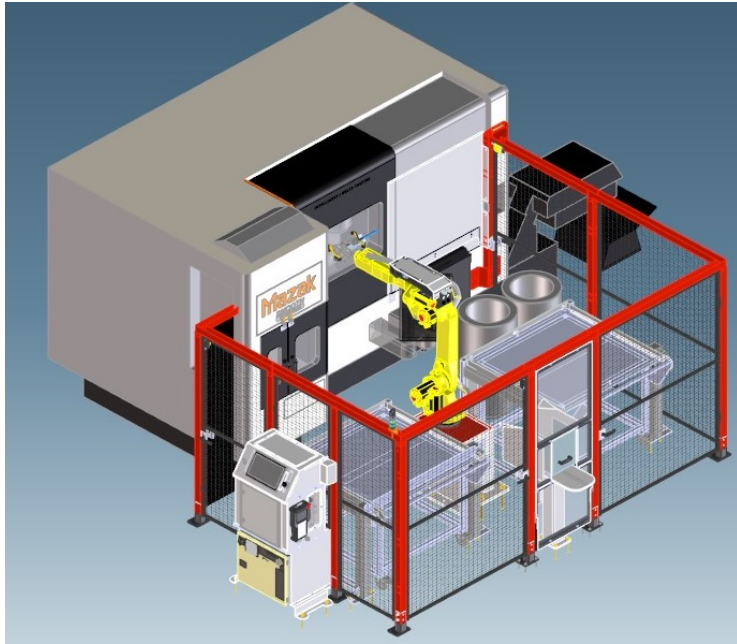


5S LEAN WORKPLACE

-  **1. SORT**
Organization – keeping only what is necessary and discard everything else – when in doubt, throw it out
-  **2. SET IN ORDER**
Orderliness – arranging and label only necessary items for easy use and return by anyone
-  **3. SHINE**
Cleanliness – keeping everything swept and clean for inspection – for safety and preventative maintenance
-  **4. STANDARDIZE**
Standardized cleanup – the state that exists when the first three pillars or “S’s” are properly maintained
-  **5. SUSTAIN**
Sustaining the discipline– making a habit of properly maintaining correct procedures



Manufacturing Internship Exposure: Automation



Students are exposed to cutting edge Automation – which enhances and advances Technically minded careers.



Manufacturing Internship Exposure: The very latest in Mfg. Technology

Plan-Do-Check-Act (PDCA) Cycle



Multiple work cells with the latest technology





Manufacturing Internship Exposure: Inspection and ISO Processes



Portable, Benchtop CMM



Logan History

What We Make:

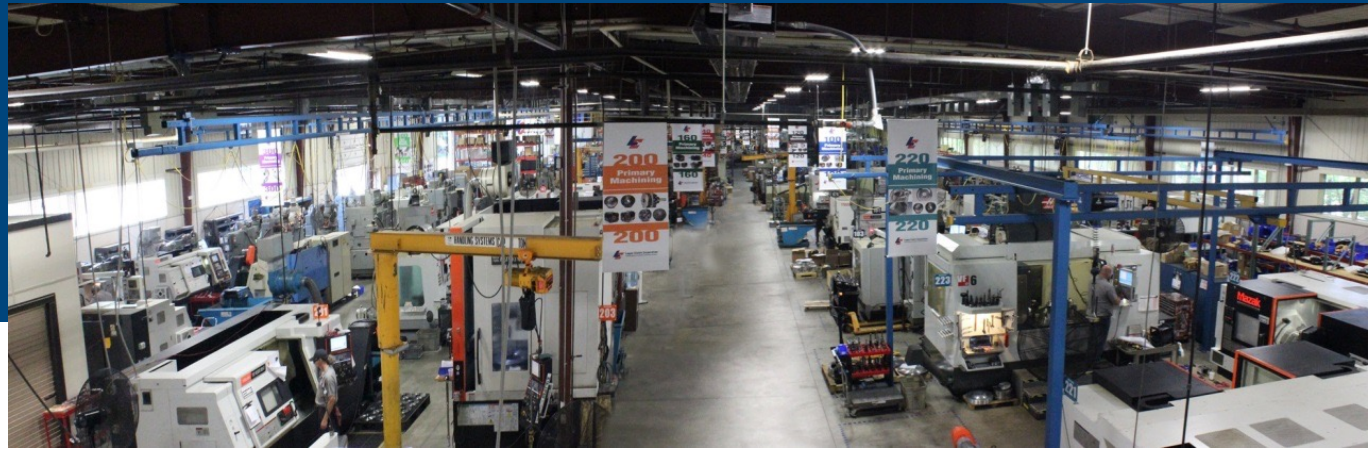
Logan is an OEM manufacturer of Industrial Clutches, and Drive Solutions for a variety of markets.

Markets Include:

Machine Tool, Industrial, Marine, Mobile Equipment, Irrigation, Agriculture, Rail, Oil & Gas, Fire Fighting, Snow Removal, On and Off-Highway Industries, Dredging, Hydro Excavation, Septic Trucks, Environmental-Recycling Markets

Clutch Applications for Following:

Pump Drives, Trenchers, Tunnel Boring and Snow Removal Equipment, Main and Auxiliary Propulsion for Marine Transmissions, Water Jetting and Auxiliary Equipment



Company History:

- Founded in 1975 – Family owned and operated over 49 yrs., 2nd generation since 1987 - over 39 years.
- Privately Held – Family owned
- **Profile and Capabilities:**
 - 500 active customers in more than 40 countries.
 - Over 30 full time and part-time employees, many of whom have been with company 10-30 or more years.
 - 15 patents and multiple trademarks
 - 99% of what we manufacture is under 1 roof in our 60,000 Sq. ft. / 5574 square meter facility, with significant of room for expansion.



Products

PUMP DRIVE APPLICATIONS



SCREW MACHINES

HPC SERIES



FRONT OF ENGINE / FRONT MOUNT PTO'S



FLEXADRITE™



LVC SERIES



CLUTCH DISCS

SAE DIRECT DRIVE PTO'S

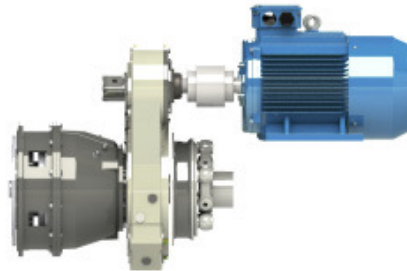


CH SERIES



BELL HOUSING PTO'S

FLEXADRITE HT™ HYBRID TECHNOLOGY



INDUSTRIAL CLUTCHES

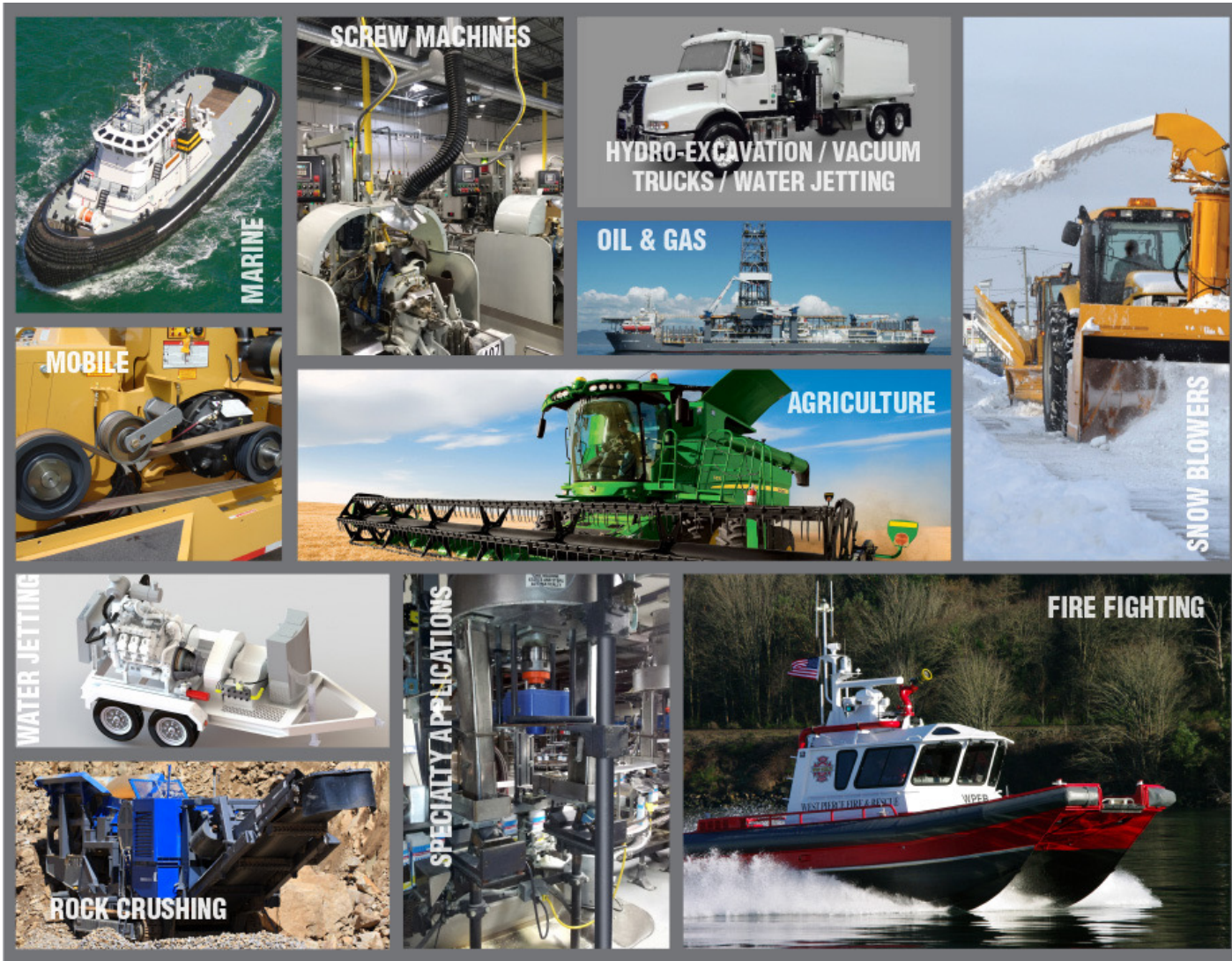


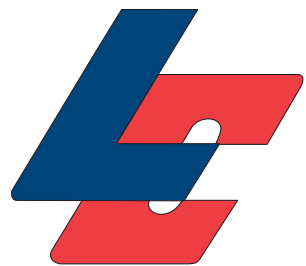
LOGAN CONTROLS

LCT SERIES



Markets





Logan Clutch Corporation[®]
manufacturers of clutches and brake products

Cleveland, Ohio USA